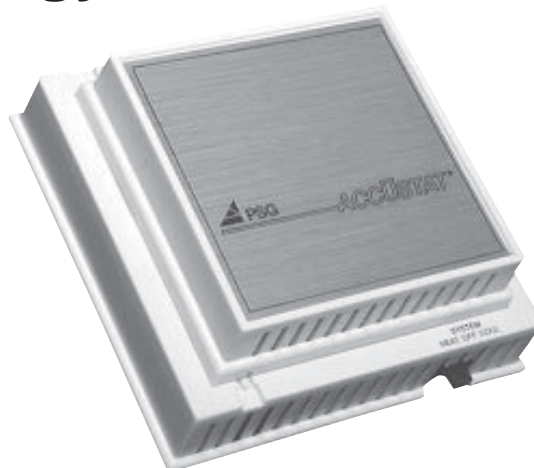


# Accustat® Low Voltage Multi Stage Energy Controls

## Description:

ACCUSTAT® Multi-stage control uses preset or adjustable ACCUTHERM® snap-in sensors. ACCUSTAT® controls have been proven to save energy, up to 15% over the conventional bi-metal thermostats. ACCUSTAT® LMS series energy controls are solid-state controls for multistage systems using preset or adjustable snap-in sensors. Advantages include high accuracy, no drift and independently adjustable individual stage set points. No bi-metal elements are used. Built-in locking covers, opened with a special key, provide tamper resistance. No leveling or anticipator adjustments are necessary. Wiring and terminal identification complies with industry standards. Differential is between 1.5° to 3° F, depending on system.



## Application:

Ideal for commercial and industrial installation where accurate, tamper-proof control is required. Examples are: Fast Food Stores; Restaurants; Churches; Schools; Retail Stores; etc.

## Features:

- Locking Case** - Requires special key to open (provided with each control)
- Easy to Install** - Same wiring as the bi-metal thermostat
- Tamper Resistant** - Temperature settings cannot be adjusted when preset sensor is used. Selected models have the switches concealed under the cover.
- Precise Temperature Control** - No leveling and no anticipators to adjust.

## Specifications:

<b>Voltage:</b>	18-26 VAC
<b>Sensing:</b>	Preset or Adjustable Sensors Sold Separately
<b>Rating:</b>	1.2 Amps per stage
<b>Stages:</b>	Multi-Stage
<b>Differential:</b>	Approx. 2° F depending on air flow
<b>Case:</b>	Plastic, White
<b>Locking Case:</b>	Special Key Required
<b>Wire Connections:</b>	Screw Terminal
<b>Dimensions:</b>	4.6Wx4.6Hx1.5D

**Preset sensors ("S" Series)** are available in the following temperatures: 35°, 37°, 39°, 40°, 45°, 50°, 55°, 60°, 62°, 64°, 65°, 66°, 68°, 70°, 72°, 74°, 75°, 76°, 78°, 80°, 82°, 84°, 86°, 88° F. Other temperature settings available on special order. Calibration accuracy is ± 0.5° F.

**Adjustable Sensors (Model AS-90)** Range is +40° F to +90° F in 2° subdivisions. Calibration accuracy is ± 2.0° F.

Model	Function/ Stages	Sensors Required	System Switches	Fan Switch	Terminals
LMS-A2	2 CL	2	On/Off	Auto/On	R, Y1, Y2, G
LMS-H2	2 HT	2	On/Off	Auto/On	R, W1, W2
LMS-AH12	1 CL/ 2 HT	3	HT/Off/Auto/CL	Auto/On	RH, RC, W1, W2, Y, G
LMS-AH21	2 CL/ 1 HT	3	HT/Off/Auto/CL	Auto/On	RH, RC, W, Y1, Y2, G
LMS-AH22	2 CL/ 2 HT	4	HT/Off/Auto/CL	Auto/On	RH, RC, W1, W2, Y1, Y2, G
LMS-AH22NS*	2 CL/ 2 HT	4	HT/Auto/CL; On/Off	Auto/On	RH, RC, W1, W2, Y1, Y2, G
LMS-AH22IF^	2 CL/ 2 HT	4	Isolated Fan Circuit	Auto/On	RH, RC, W1, W2, Y1, Y2, G

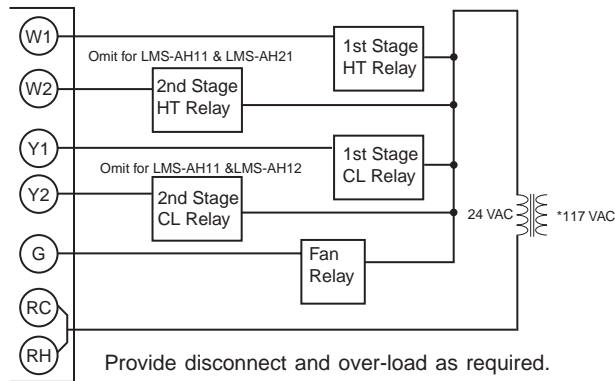
\* All switches concealed. May be used as single stage control by omitting 2nd stage sensors.  
^ For gas fired roof tops that require fan and heat at the same time and not provided for in HVAC units.

 **PSG Controls, Inc.**  
Setting New Standards in Temperature Controls

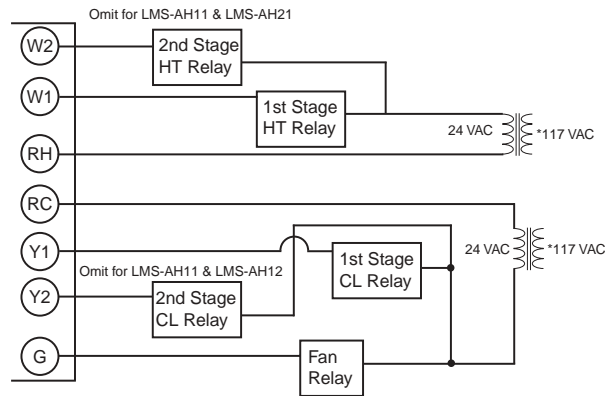
P.O.Box 157 - Perkasie, PA 18944 - 215-257-3621 - Fax 215-257-4288  
Web site: www.psgcontrols.com — E-mail: sales@psgcontrols.com

## Wiring:

### System with one transformer:



### System with two transformers:



#### NOTE:

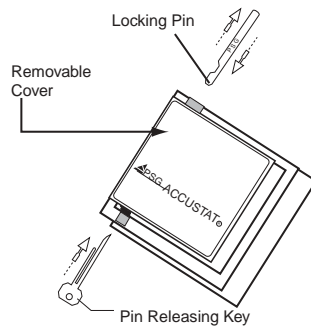
LMS-AH22IF model wires the same as other multistage ACCUSTAT® models. Internal relay provides fan circuit isolation for gas fired systems.

Observe the following procedures:

1. Do not turn off cooling system power. Y1 must always be live.
2. Y1 impedance should not exceed 500 ohms. If impedance is more than 500 ohms, install a 10 watt 100 ohm resistor across Y1 contactor coil.

For applications where wiring is different from that shown, please call our Technical Hotline at 1-800-523-2558.

### Locking Cover



### Engineering Specifications:

("SAMPLE" FROM PREVIOUS SPEC SHEET) Thermostat shall be low voltage multistage heating and/or cooling type, with snap-in preset or adjustable sensors. The electrical rating shall be 1.2 amp max. @24-30 VAC(Heat pump model: 1.5 amp.max@24-30 VAC). Sensors shall be hermetically sealed, and activated by mercury column contacting internal platinum electrodes. Case shall be molded plastic, with an integral locking cover.

### Warranty:

PSG controls carry a "limited 1 year warranty" against defects in workmanship and materials (contact PSG for full warranty policy).

**Customer Service 1-800-782-8412**

 **PSG** Controls, Inc.  
Setting New Standards in Temperature Controls